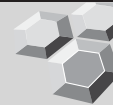


Assembly & Installation Guide

RB050-2: DOUBLE CROSSBAR KIT



PLEASE READ INSTRUCTIONS FULLY PRIOR TO INSTALLATION OF CROSSBAR KIT

This instruction is to illustrate the recommended installation method for our Crossbar Kit, any deviation from this will be the sole responsibility of whoever carries out the installation.

PLEASE ENSURE THAT THE MANUFACTURERS MAXIMUM ROOF LOADING IS NOT EXCEEDED
(Refer to vehicle handbook)

REGULARLY INSPECT CROSSBARS AND ENSURE ALL FIXINGS ARE SECURE

THE PARTS LIST ILLUSTRATED RELATES TO COMPONENTS SUPPLIED WITHIN RB050-2 EACH PHASE OF THE INSTALLATION WILL HAVE IT'S OWN PARTS LIST

Prior to each phase of installation please ensure all the items listed are present, we advise each foot bracket bag is opened when instructed.

SCALE OF ITEMS WILL VARY TO AID VISUAL IDENTIFICATION

- 1** 699-0701: INSTALLATION GUIDE - x1
- 2** RB-1600: 1600mm CROSSBAR - x2
INCLUDED WITHIN EACH RB-1600 BAG:
 - 1600mm EXTRUDED CROSSBAR - x1
 - PLASTIC END CAP - x2
- 3** 1750mm PVC STRIP - x2
- 4** RB050-01: FRONT AND REAR BRACKET KIT - x2

TOOLS REQUIRED (Not included within kit)

10mm SPANNER
KNIFE OR CUTTERS
TAPE MEASURE
T30 TORX BIT



IF ANY ACCESSORIES LISTED BELOW HAVE BEEN PURCHASED PLEASE REFER TO
ADDITIONAL INSTALLATION GUIDE SUPPLIED WHEN INSTRUCTED.

LOAD STOPS: LS2 - SIDE LOAD STOPS OR FS1 - FRONT LOAD STOPS

LADDER CLAMP: LC1

THE ABOVE WILL BE REFERRED TO WITHIN THIS INSTALLATION PROCESS.



Assembly & Installation Guide

RB050-2: DOUBLE CROSSBAR KIT

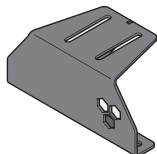
PHASE 1: RB050-01 REAR CROSSBAR FIXING KIT



FROM THE FIXING KIT SUPPLIED, ONLY THE ITEMS AND QUANTITIES LISTED BELOW ARE REQUIRED

SCALE OF ITEMS WILL VARY TO AID VISUAL IDENTIFICATION

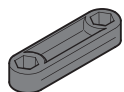
1: FOOT BRACKET - x2
Part No: **702-1733-PCBAC**



2: FOOT PAD - x2
Part No: **812-0237**



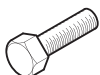
3: NUT RETAINER - x4
Part No: **802-0098**



4: M6x20mm SET A2 - x8
St.Steel



5: M6x25mm SET A2 - x4
St.Steel



6: M6 SQ SPRING WASHER A2 - x4
St.Steel



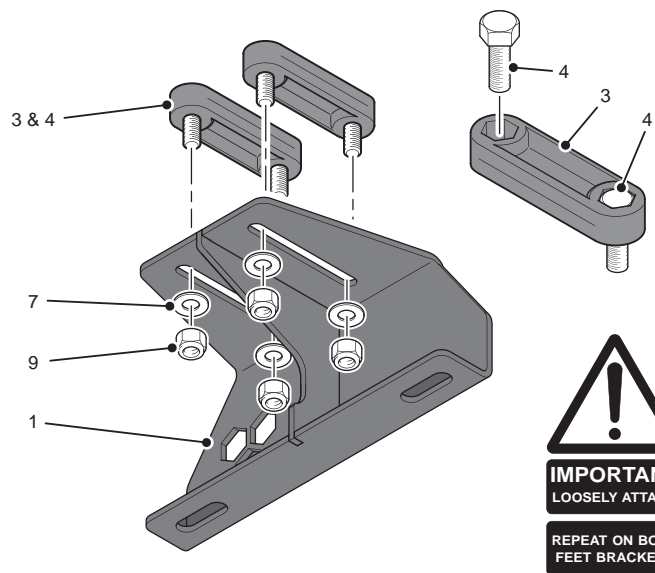
7: M6 FMC WASHER A2 - x8
St.Steel



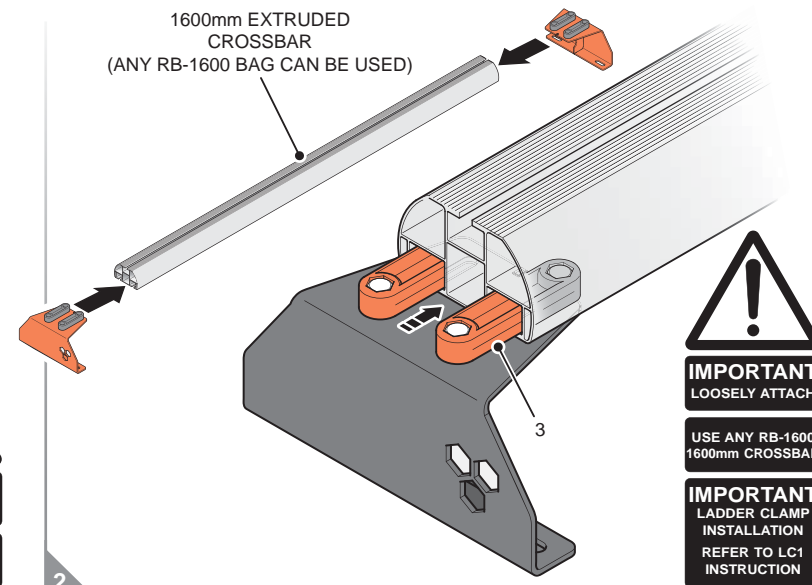
8: 1/4 x 3/4" REPAIR WASHER - x4
St.Steel



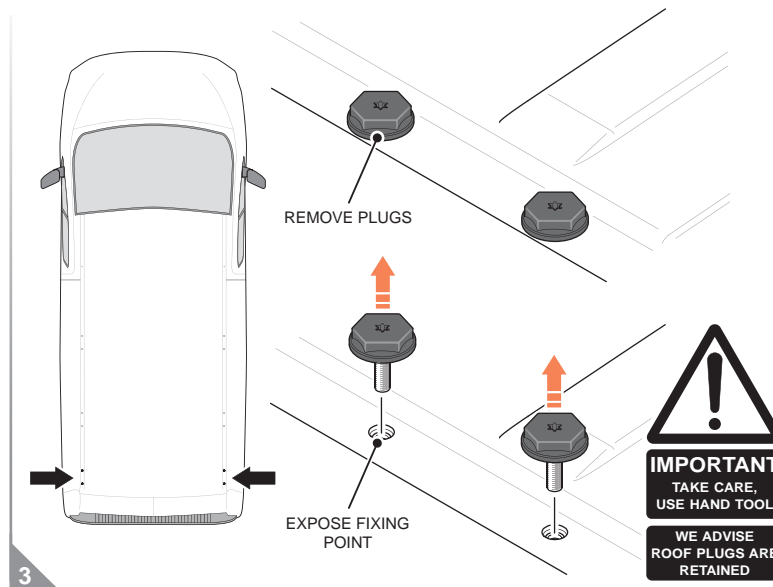
9: M6 T NYLOC NUT A2 - x8
St.Steel



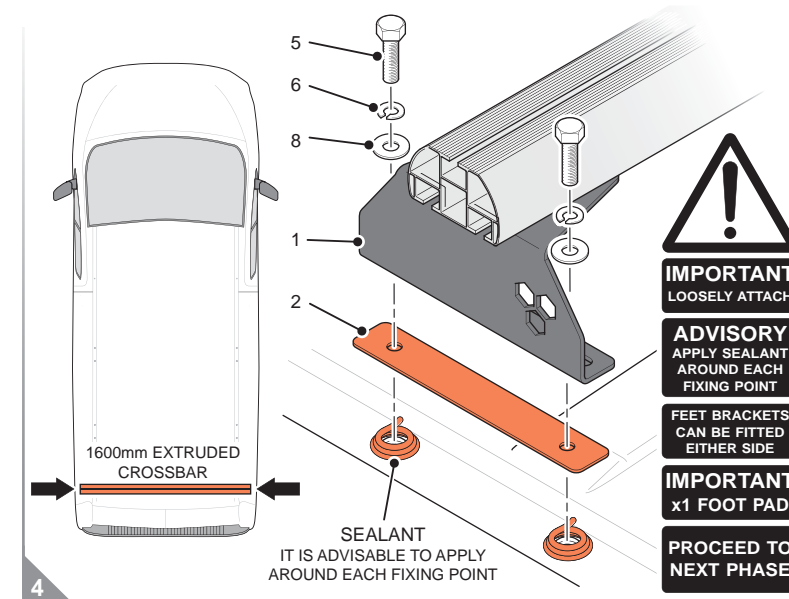
A: LOCATE M6x20mm SET (4) INTO ALL NUT RETAINERS (3) AS SHOWN ABOVE.
B: LOOSELY ATTACH NUT RETAINERS AS SHOWN ONTO BOTH FEET BRACKETS (1).



SLIDE NUT RETAINERS (3) ATTACHED TO FEET BRACKETS (1) INTO 1600mm CROSSBAR AS SHOWN.
NOTE: THE FEET BRACKETS ARE IDENTICAL SO CAN BE LOCATED AT EITHER END.



REMOVE FACTORY FITTED ROOF PLUG AT LOCATIONS INDICATED '➡' USING T30 TORX BIT.
TAKE CARE WHEN REMOVING ROOF PLUGS, IT IS ADVISABLE TO EASE OUT WITH A HAND TOOL



ATTACH FEET BRACKETS ONTO VEHICLE AS SHOWN AT LOCATIONS INDICATED '➡'.
NOTE: AS FEET BRACKETS ARE IDENTICAL THEY CAN BE FITTED EITHER SIDE OF VEHICLE.

Assembly & Installation Guide

RB050-2: DOUBLE CROSSBAR KIT

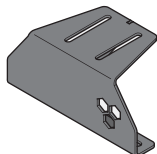
PHASE 2: RB050-01 FRONT CROSSBAR FIXING KIT



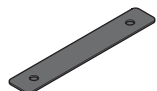
FROM THE FIXING KIT SUPPLIED, ONLY THE ITEMS AND QUANTITIES LISTED BELOW ARE REQUIRED

SCALE OF ITEMS WILL VARY TO AID VISUAL IDENTIFICATION

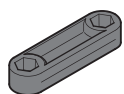
1: FOOT BRACKET - x2
Part No: **702-1733-PCBAC**



2: FOOT PAD - x2
Part No: **812-0237**



3: NUT RETAINER - x4
Part No: **802-0098**



4: M6x20mm SET A2 - x8
St.Steel



5: M6x25mm SET A2 - x4
St.Steel



6: M6 SQ SPRING WASHER A2 - x4
St.Steel



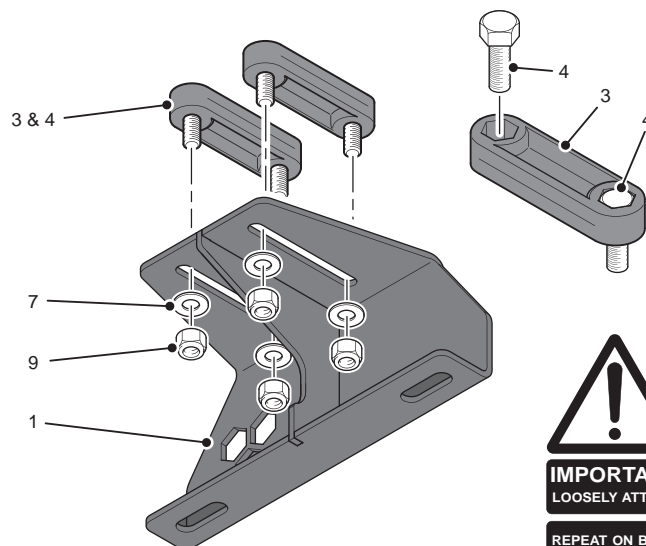
7: M6 FMC WASHER A2 - x8
St.Steel



8: 1/4 x 3/4" REPAIR WASHER - x4
St.Steel

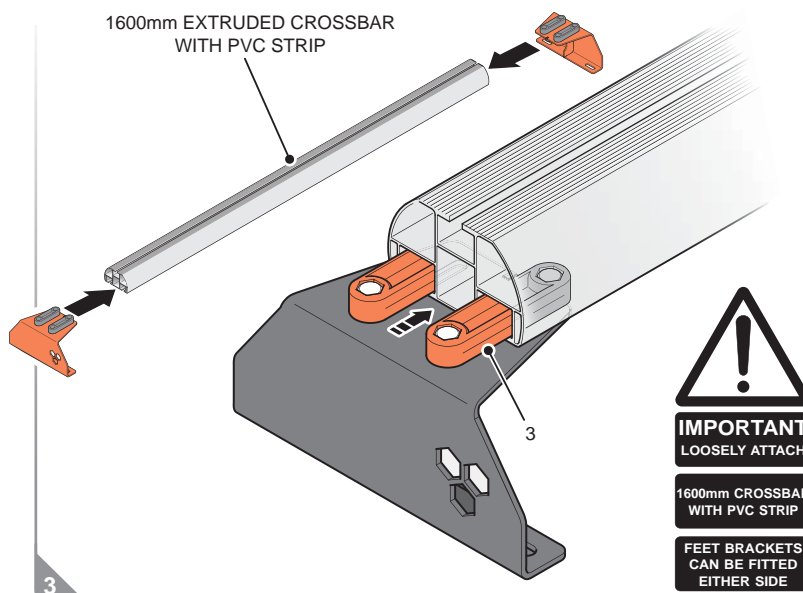


9: M6 T NYLOC NUT A2 - x8
St.Steel



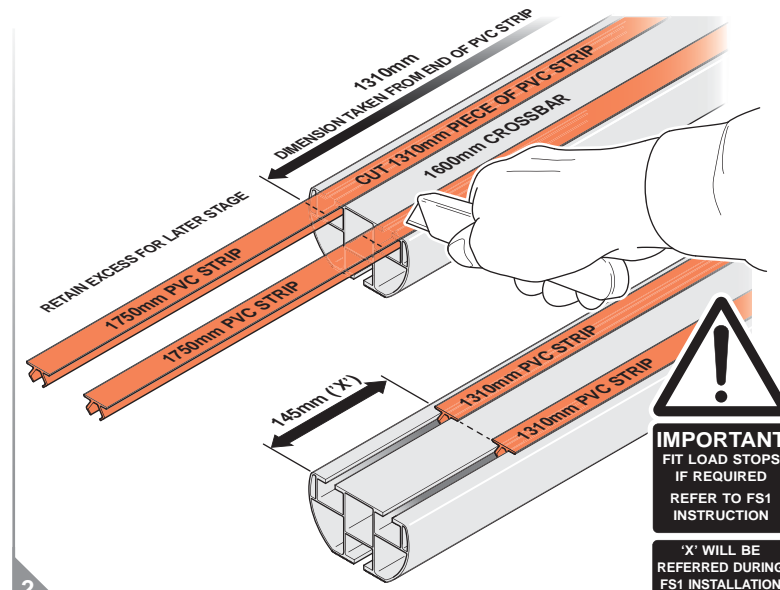
1

A: LOCATE M6x20mm SET (4) INTO ALL NUT RETAINERS (3) AS SHOWN ABOVE.
B: LOOSELY ATTACH NUT RETAINERS AS SHOWN ONTO BOTH FEET BRACKETS (1).



3

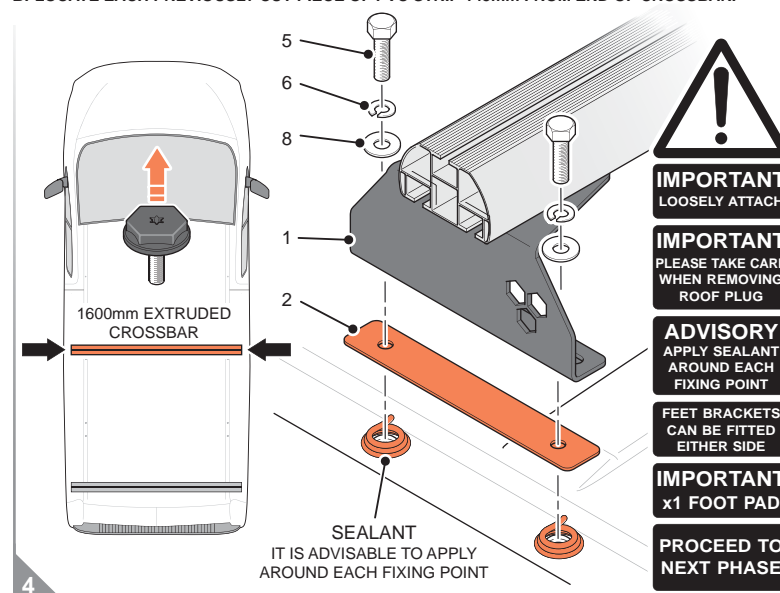
SLIDE NUT RETAINERS (3) ATTACHED TO FEET BRACKETS (1) INTO 1600mm CROSSBAR AS SHOWN.
NOTE: THE FEET BRACKETS ARE IDENTICAL SO CAN BE LOCATED AT EITHER END.



2

IMPORTANT: IF LOAD STOPS ARE REQUIRED, THE FORWARD STOPS WILL NEED TO BE FITTED NOW.

A: INSERT EACH 1750mm PVC STRIP INTO CROSSBAR, CUT A 1310mm PIECE FROM EACH.
B: LOCATE EACH PREVIOUSLY CUT PIECE OF PVC STRIP 145mm FROM END OF CROSSBAR.



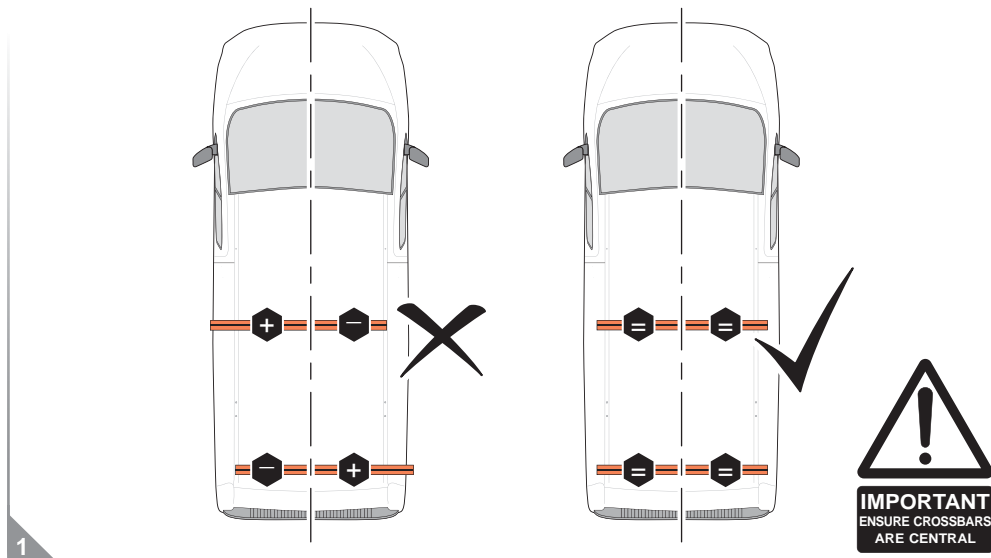
4

A: REMOVE EACH FACTORY FITTED ROOF PLUG AT LOCATIONS INDICATED 'X'.
B: ATTACH FEET BRACKETS ONTO VEHICLE AS SHOWN AT LOCATIONS INDICATED

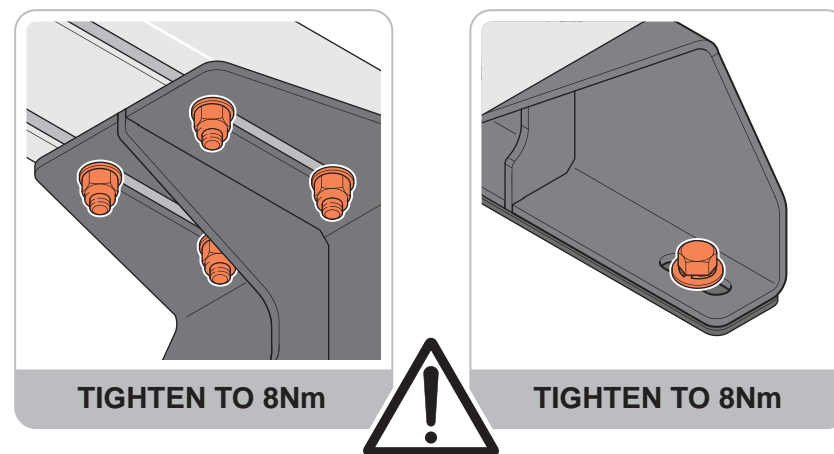
Assembly & Installation Guide

RB050-2: DOUBLE CROSSBAR KIT

PHASE 3: COMPLETION OF CROSSBAR KIT INSTALLATION

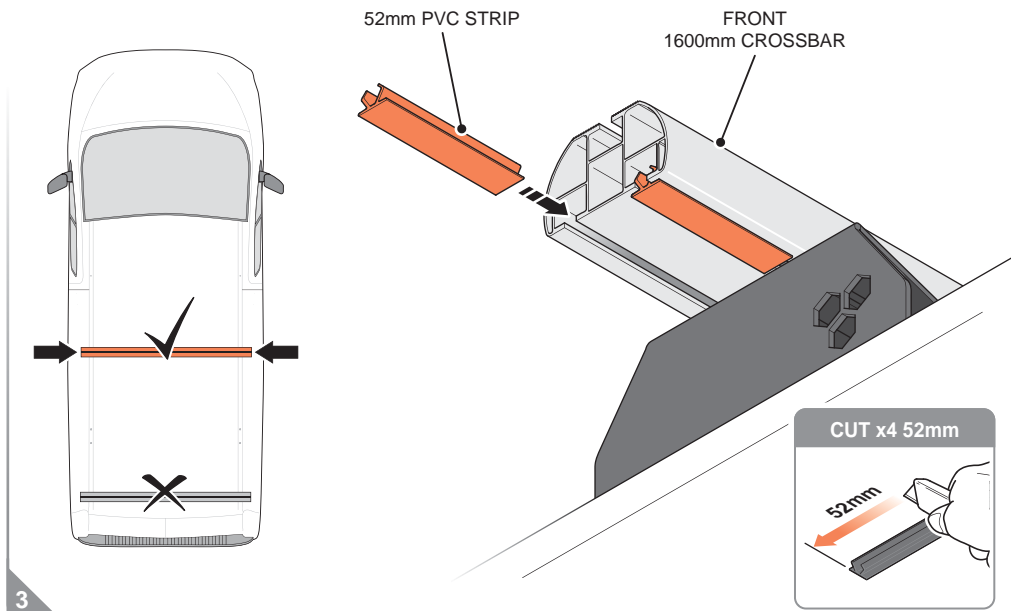


1 ENSURE EACH CROSS-MEMBER IS LOCATED CENTRALLY

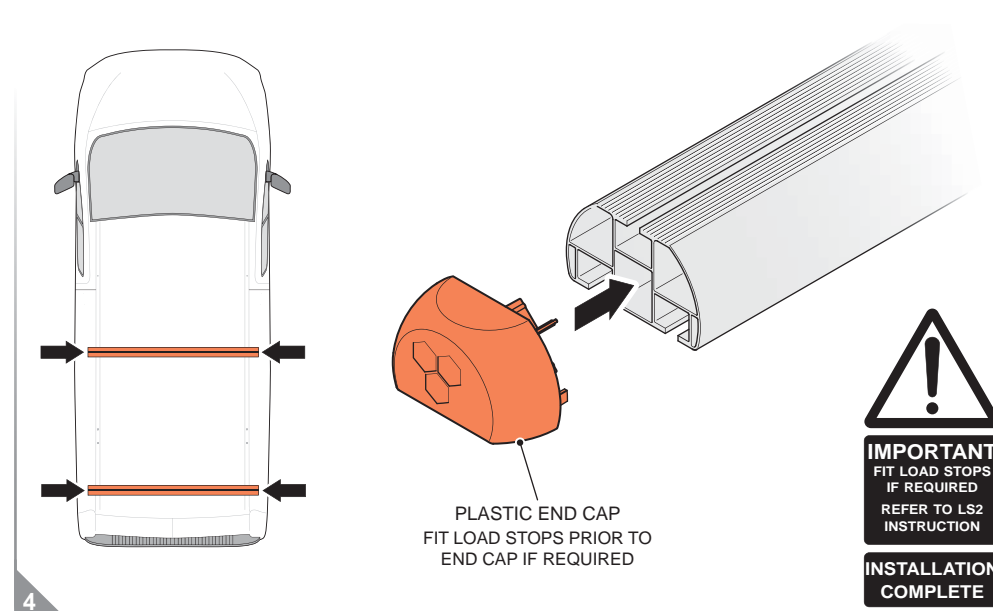


2

TIGHTEN ALL FASTENERS TO RELEVANT TORQUE SETTINGS SPECIFIED



3
A: CUT x4 52mm PIECES OF PVC STRIP FROM EXCESS LEFT OVER FROM EARLIER PROCEDURE.
B: INSERT EACH PIECE OF PVC STRIP INTO FRONT CROSS-MEMBER APERTURES AS SHOWN.



4
LOCATE A PLASTIC END CAP INTO EACH END OF ALL CROSS-MEMBERS AS SHOWN ABOVE.
ENSURE ALL FASTENERS HAVE BEEN TIGHTENED TO SPECIFIED TORQUE SETTINGS.